

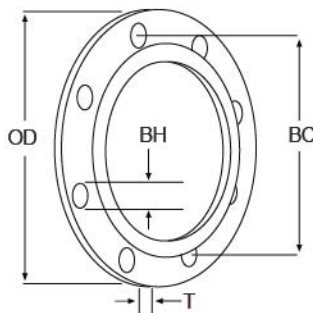
Nicoll

BACK UP RINGS USO CON ADAPTADOR FLANGE



BACK UP RINGS

ESPECIFICACIONES TÉCNICAS



Diámetro nominal (Pulg.)	Diámetro Externo OD (Pulg.)	Material	Dimensiones				
			OD(Pulg.)	T(Pulg.)	Bolts(#)	BH(Pulg.)	BC(Pulg.)
3/4	1.0	Ductil Iron	3.875	0.5	4	0.625	2.75
		Stainless Steel	"	0.5	"	"	"
1	1.315	Ductil Iron	4.25	0.56	4	0.625	3.125
		Stainless Steel	"	0.56	"	"	"
1 1/4	1.66	Ductil Iron	4.625	0.63	4	0.625	3.5
		Stainless Steel	"	0.6	"	"	"
1 1/2	1.9	Ductil Iron	5	0.69	4	0.625	3.875
		Stainless Steel	"	0.69	"	"	"
2	2.375	Ductil Iron	6	0.5	4	0.75	4.75
		PP Coated DI	"	0.71	"	"	"
		Stainless Steel	"	0.4	"	"	"
3	3.5	Ductil Iron	7.5	0.53	4	0.75	6
		PP Coated DI	"	0.71	"	"	"
		Stainless Steel	"	0.94	"	"	"
4	4.5	Ductil Iron	9	0.55	8	0.75	7.5
		PP Coated DI	"	0.71	"	"	"
		Stainless Steel	"	0.94	"	"	"
6	6.625	Ductil Iron	11	0.63	8	0.875	9.5
		PP Coated DI	"	0.79	"	"	"
8	8.625	Stainless Steel	"	1	"	"	"
		Ductil Iron	13.5	0.85	8	0.875	11.75
10	10.75	PP Coated DI	"	1.1	"	"	"
		Stainless Steel	"	1.12	"	"	"
12	12.75	Ductil Iron	16	0.98	12	1	14.25
		PP Coated DI	"	1.22	"	"	"
12	12.75	Stainless Steel	"	1.19	"	"	"
		Ductil Iron	19	1.25	12	1	17
		PP Coated DI	"	1.61	"	"	"
		Stainless Steel	"	1.25	"	"	"

CONSULTAS TÉCNICAS

Contamos con un departamento de Asistencia Técnica, el cual lo puede asesorar en el momento del proyecto y de la instalación de nuestro producto.

Teléfono: 219 4500

Nicoll Perú S.A.

an OAliaxis company

LIMA
Ca. Venancio Ávila 1990, Urb. Chacra Ríos
Lima 01 - Central Telefónica: (01) 219-4500
Fax: (01) 431-3764

AREQUIPA
Variante de Uchumayo, Km 1.5
Distrito de Sachaca
Teléfonos: (054) 470-046 / 470-043

LURÍN
Carretera Panamericana Sur Km. 31
Teléfonos: (01) 430-1855 / 430-1080